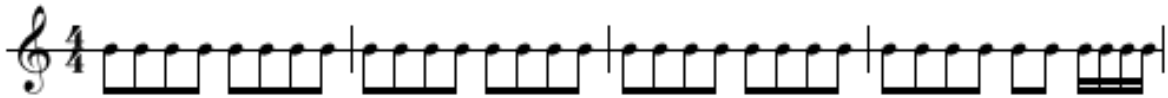


Music Machine 12

Music Machine 12 plays a melody using notes from a selected mode or scale.

There are eight choices of mode or scale, the six principal ecclesiastical modes (dorian, phrygian, lydian, mixolydian, aeolian, ionian as well as the blues scale and the pentatonic scale).

The rhythm of the melody is a transcription of a melody that I heard whilst be put 'on hold' during a recent telephone call.



The machine will run indefinitely until stopped by the user.

Music Machine 12 © Simon Belshaw 2006

simon@simonbelshaw.co.uk

www.simonbelshaw.co.uk

[music machines home page](#)